

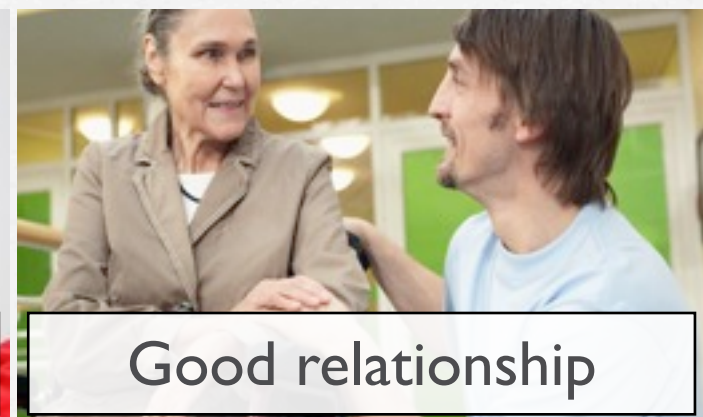
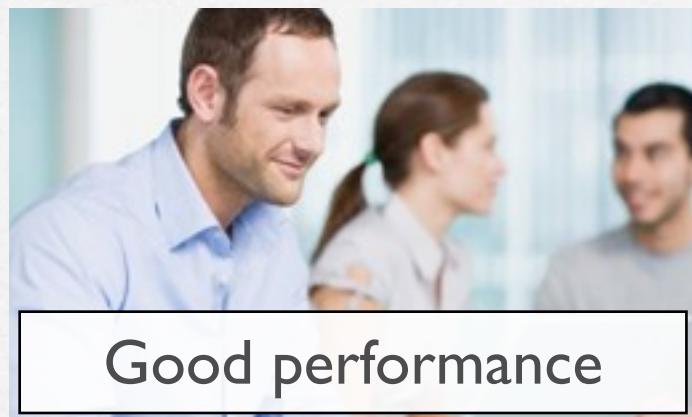


**H**uman **I**nformation **T**echnology Lab.



# Human Information Technology Lab.

Our research theme is about  
**HCI** (Human-Computer Interaction) for...



We have 4 research groups;

- D** : Daily
- E** : Entertainment
- L** : Life Logging
- R** : Reality



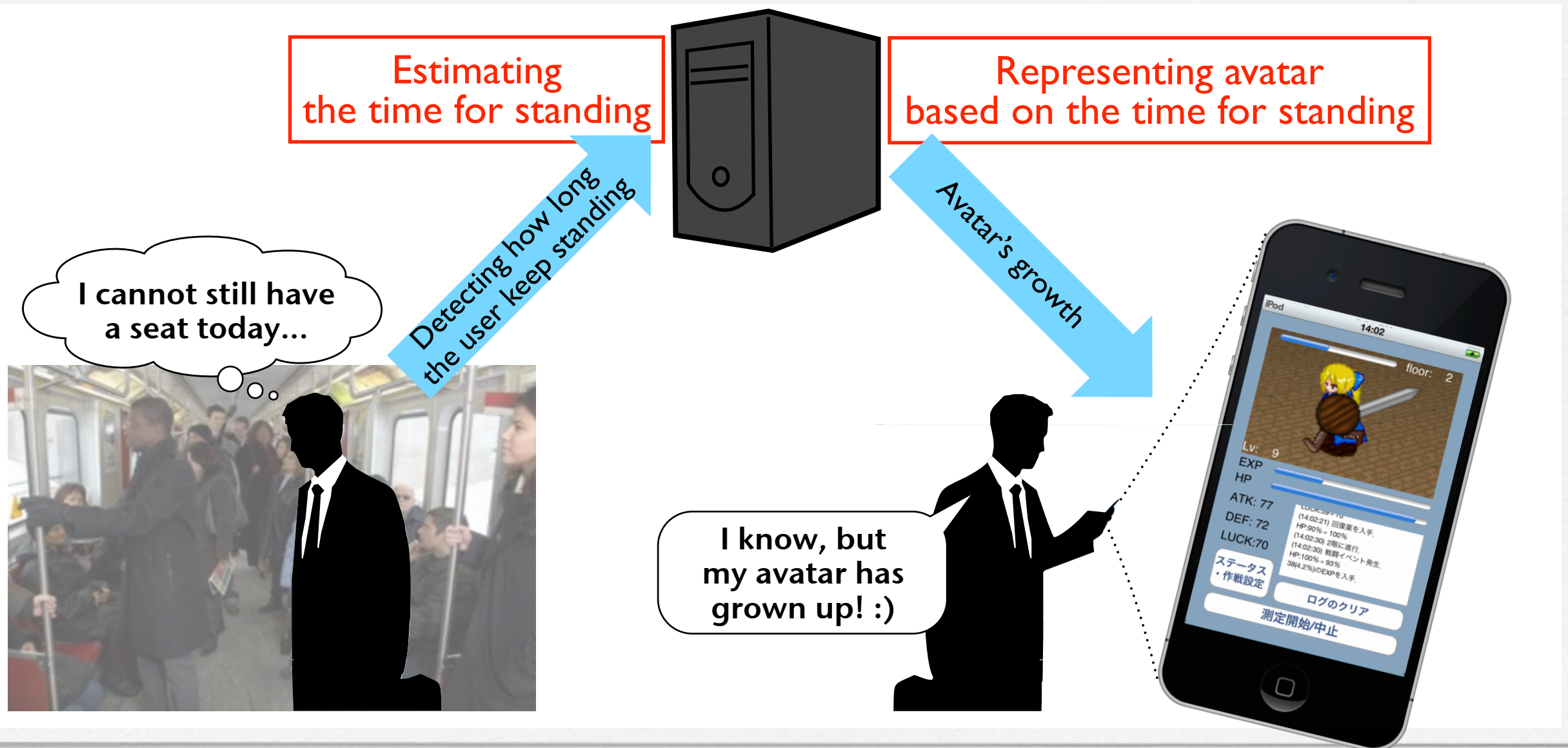
# Examples of our research topics

- ▷ “WearReport: Avoiding Clothe Conflict against Friends Based on Shared Wearing History” (published in GCCE2013)
- ▷ “Notification Design Using Mother-like Expression” (published in IHAI2014)
- ◻ “Stand Up, Heroes!: Gamification for Standing People on Crowded Public Transportation” (published in HCII2013)
- ◻ “ChoiceLog: Life Log System Based on Choices for Supporting Decision-Making” (published in HCII2014)
- ◻ “Onomatrack: Quick Recording of User's Rhythmic Ideas Using Onomatopoeia” (published in ACE2013)
- ◻ “Visualizing Velocity and Acceleration on Augmented Practice Mirror Self-Learning Support System of Physical Motion” (published in ACIT2013)



# *Stand Up, Heroes!*

A gamification system for standing people on crowded public transportation.



# ChoiceLog

A life log system based on choices for supporting decision-making.

One day, in a cafeteria

Umm... OK.  
I'll order **menu A**  
this time.

and **menu B**  
next time.

Menu A    Menu B

Archive

Notify

A few months later, in the same cafeteria

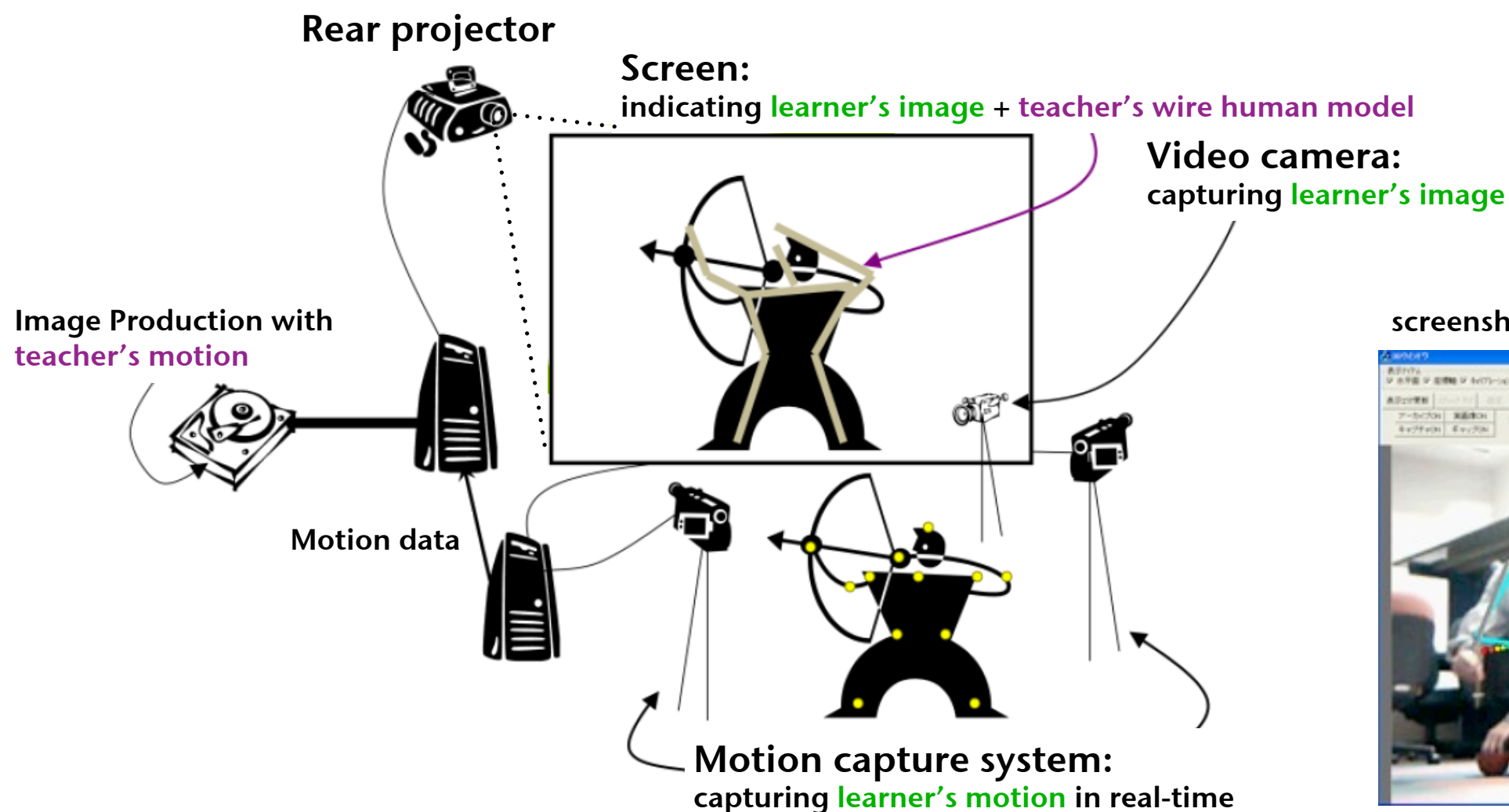
Ah! I wavered about  
lunch here before...  
OK! This time, menu B!





# *Augmented Practice Mirror*

A self-learning support system for physical motion using mirror interface.



screenshot



# Contact and More Info.

## Staff:



**Yoshihiro Tsujino**

✉ [tsujino@kit.ac.jp](mailto:tsujino@kit.ac.jp)



**Itaru Kuramoto**

✉ [kuramoto@hit.is.kit.ac.jp](mailto:kuramoto@hit.is.kit.ac.jp)



**Keiko Yamamoto**

✉ [kei@kit.ac.jp](mailto:kei@kit.ac.jp)

## Web site:



<http://www.hit.is.kit.ac.jp>

## HIT channel(Youtube):



<http://www.youtube.com/user/HumanInfoTechLab>